

(148)

Sec. 1/4  
S 89° 36' E. 2640.0

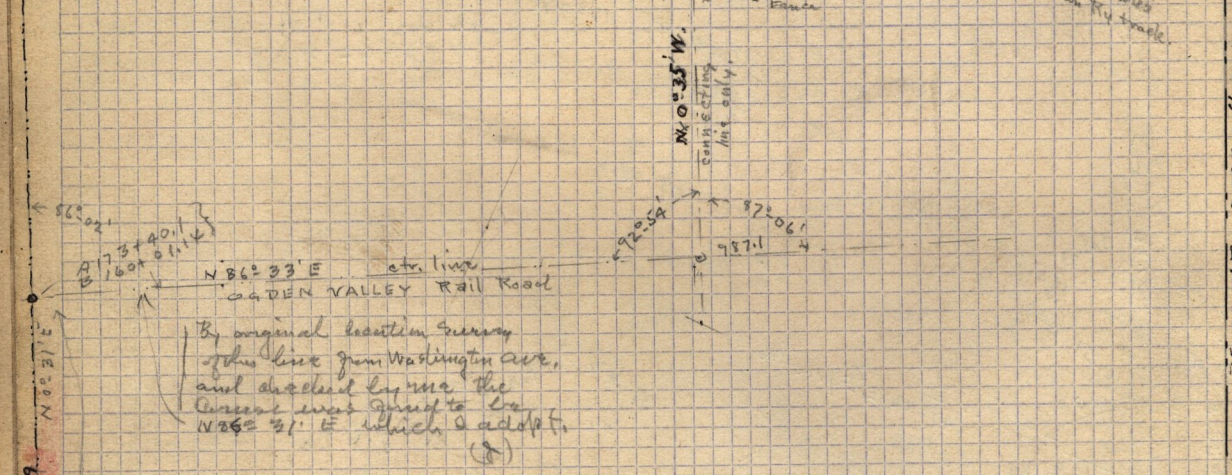
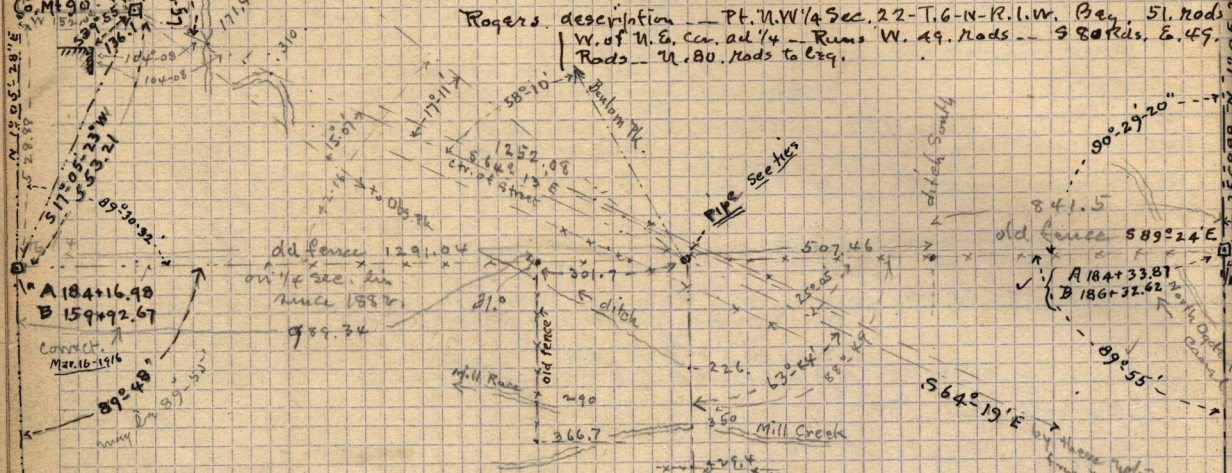
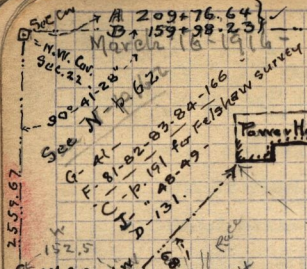
A 210+02.75  
B 186+38.10

Survey in N.W. 1/4 Sec. 22 - T. 6 - N - R. 1 - W. (Ene helped idem)

Ties to Pipe | N.W. 27.9 to pole --- N.W. 99.2 to pole --- S.W. 385.8 to pole  
S.E. 54.0 to pole --- E 74. to St. fence W 355.0 to 7th

Woolen Mills description --- Beg. 143.2 ft. N 0° 59' to, from S.E. Cor. N. 6 1/2 Sec  
21-T. 6, N. R. 1 - W. on Sec. line --- thence N 89° 01' W. 78 ft. ---  
N 0° 59' E. 290 ft. --- S 89° 01' E. 300 ft. --- S 0° 59' W 290.4 ft. ---  
N 89° 01' W 222.9 ft to beg. 2. a.

Rogers description --- Pt. N.W. 1/4 Sec. 22 - T. 6 - N - R. 1 - W. Beg. 51. Rods  
W. of N. E. Cor. ad 1/4 --- Runs W. 49. Rods --- S 80 Rods, E. 49.  
Rods --- N. 80. Rods to beg.



Note! From N.E. Cor. S.W. 1/4 Sec. 22  
= S 88° 20' 26" E 2621.19 ft. to 1/4 Cor. on E. line Sec. 22

Corrected Sta.  
A 157+37.91  
B 186+45.88

Corrected Sta. of  
S.E. Cor. Sec. 22  
A 157+22.41  
B 210+70.11